



The Pow Wow Newspaper

---

2-17-1961

## The Pow Wow, February 17, 1961

Heather Pilcher  
pilcher@ulm.edu

Follow this and additional works at: [https://repository.ulm.edu/pow\\_wow](https://repository.ulm.edu/pow_wow)

---

### Recommended Citation

Pilcher, Heather, "The Pow Wow, February 17, 1961" (1961). *The Pow Wow Newspaper*. 702.  
[https://repository.ulm.edu/pow\\_wow/702](https://repository.ulm.edu/pow_wow/702)

This Book is brought to you for free and open access by ULM Digital Repository. It has been accepted for inclusion in The Pow Wow Newspaper by an authorized administrator of ULM Digital Repository. For more information, please contact [lowe@ulm.edu](mailto:lowe@ulm.edu).

'SOUTH PACIFIC'  
STAGES  
FIRST NIGHT

# POW. WOW

MILITARY  
BALL  
SCHEDULED

Vol. XXXII, No. 14

NORTHEAST LOUISIANA STATE COLLEGE, MONROE, LOUISIANA

Friday, February 17, 1961

## Seventy-Nine Slated To Receive Degrees

Seventy-nine students completed requirements for degrees at the end of the fall semester, Dr. Lake Oxford, registrar, announced. Degrees will be conferred during commencement exercises at the close of the spring semester.

Students fulfilling requirements, their residences and departments or divisions in which they were enrolled include:

### AGRICULTURE and HOME ECONOMICS

Howard Lee Ainsworth, Monroe; James Edward Dixon, Dunn; Mollie Sue Guin, Kelly; Terrell Maxwell, Jackson, Delhi; Neva Lyons McKay, Monroe; Madge Siddon Wilson, Monroe.

### BIOLOGY

Robert Henry Kennedy, Monroe; James W. Saxon, West Monroe; Jacob Preston Yelverton, Rayville; C. Palmer Jarrell Jr., Monroe.

### BUSINESS ADMINISTRATION

Justin Colvin, Monroe; Tommy C. Fryant, West Monroe; Leon Festus Hill Jr., Monroe; Rudolph Laissle, West Monroe; Loy Raymond Lorren, Monroe; Ann LaDart McClendon, Monroe; Floyd Lee Mixon, Monroe.

### CHEMISTRY

Frank Collins Jr., Monroe.

### EDUCATION

Leslie Glynn Amos, Perryville; Nancy Sue Aymond, Monroe; Mary Dorcas Barton, Winnabow; Cecil Calvin Belgard, Monroe; Shirley Wigginton Beumer, Baskin; Evelyn Louise Bingham, Clayton; Dorothy B. Buffington, Monroe; Dennis Robert Carroll, Monroe; Ava Mildred Causey, Monroe; Donnie Louis Eastering, Winnabow; Warren Steele Enterkin, Ferriday; Augusta Juanita Fant, West Monroe; Shirley Sue Griffith, Bastrop; Joseph Charles Gross, Monroe; Alice George Hance, Monroe; James Reed Holmes, Epps; Laura Agnes Huff, Monroe; Donna Futch Knotts, Sicily Island; Linda Ann Landers, West Monroe; Charlotte Monette Latham, West Monroe.

Vivian Hare Love, Monroe; Ora Nelle Loyless, Bastrop; Mary Vickery McDonald, Monroe; Dianne Carter Mears, West Monroe; Eugene Victor Moore Jr., Monroe; Clyde Douglas Moreau, Monroe; Glen Alan Morgan, Columbia; Wilma Lee Murray, Rayville; Wanda McKinney Oden, Monroe; Virginia B. Otwell, Monroe; George Thomas Phillips, Monroe; Percy Walker Powell, Monroe; Jarvis Renfrow, Monroe; Louise Mae Robbins, Shreveport; Jerry Edward Rouse, West Monroe; Hazel Regenia Savage, Delhi; Dorris Kirby Schuchls, Ferriday; Ann Humphries Seab, Monroe; Roy Lee Sims, Epps; Sherrye Lee Sisson, West Monroe; Harry Lee Sykes, Gilbert.

Mamie Skipper Taylor, West Monroe; Fay Guyton Thurman, Monroe; Frances Smith Thurman, Monroe; Lena Montez Head Trimble, Mon-

(Continued On Page Two)

## Student Teachers For 61-62 Session May Apply Now

All students enrolled in education who plan to student teach during the session 1961-1962 are urged to apply as soon as possible, instructs Charles N. Tillman, assistant professor of education.

Applications for student teaching at various elementary schools in the area will be accepted in Stubbs 112 (Administration Building) Monday through Saturday of next week.

## 'Americanism Vs Communism' Course Required By Legislature's Resolution

"Americanism vs Communism" is the descriptive title of a new course being required at Northeast and other state colleges, universities and high schools.

According to a resolution by the state legislature, "no student should be allowed to graduate from any high school, college or university who fails to successfully complete" the course.

### TEACHER

Dr. W. A. Walker, associate professor of history, is teaching the course which is listed here as Government 110. The one-hour course has been organized into two divisions. The first half of the semester will be used for a survey of democratic and Marxist theories.

The second half will be devoted to a practical study of the conflicting systems and will feature guest lecturers from the Liberal Arts faculty. The seven aspects to be considered are economics, political organization, diplomacy, religious attitudes, resources and geography, military comparisons, and ideals.

### RESOLUTION

The resolution, which recommended that the program be initiated beginning with the 1960-61 year, was designed "to institute a method of instruction for the youth of Louisiana in the dogmas and tenets of Americanism and to develop intelligent and aggressive opposition to communism and deep loyalty to our American political and economic system."

The course has been added to all

curricula of students in state supported schools on the level described. It requires "at least 10 clock hours" of instruction.

The requirement is being administered through the State Board of Education. The board has stipulated two books by Henry B. Mayo as texts for the course. However, the texts, *An Introduction to Democratic Theory* and *Introduction to Marxist Theory*, will not be required for the course, Walker said.

## 'Man, A Party-Like-Real Beat'

Beards will be the style and beatniks will drag out their long cigarette holders and black leotards March 11 for a beatnik dance.

Plans to have the dance next Friday were canceled because of the conflict with the visit of Gen. Carlos P. Romulo, Philippine ambassador to the United Nations, as featured lecturer of the Northeast Concerts series.

Although Romulo was to have been here this week, he had to postpone his appearance because of a special meeting called by President John F. Kennedy.

The dance will be in Ouachita Student Center from 8 p.m. to midnight. The Student Council is sponsoring the "beat party." All comers are asked to "dress" for the occasion (per "beat", that is).



**WATER, ANYONE?** — Curtis Rape, left, and Windel Dyer, right, offer their assistance to Donna Jarrell, center, in a scene from the Broadway musical, "South Pacific," which opened on its three-night run last night. Performances tonight and tomorrow night will conclude the campus production. Curtain time is 8 p.m. (Photo by Jerry May.)

## 'South Pacific' First Night Tagged 'Very Successful'

A capacity crowd viewed the first performance of a three-night run of the Rodgers-Hammerstein musical, "South Pacific."

At 8 p.m. tonight and tomorrow night the curtain will rise on the last two performances of the campus production. This is the second venture for the college. In the spring of 1960, another Rodgers-Hammerstein musical, "The King and I," was the first. It was termed by the public as "very successful."

Director of "South Pacific" is George C. Brian, associate professor of speech, who also directed "The King and I."

Palmer Jarrell, who received wide acclaim for his role as the King of Siam in "The King and I," again has the male lead, Emile de Bec, in "South Pacific."

Donna Jarrell, Jarrell's wife of only a few months, plays the role of Ensign Nellie Forbush.

### 25 MEMBER CAST

The 25 member cast is made up of sailors, marines, nurses and islanders mind scenes of a Pacific island paradise.

Musical accompaniment is provided by the college orchestra, conducted by Eloy Fominaya, assistant professor of music.

Gertrude Sandrock, assistant professor of music, has charge of vocal numbers. Pat Whatley, dance instructor, provides choreography number for the cast dancers.

Pat Medaries, senior speech major from Monroe, is assistant director.

In a statement Brian replied, "I was well pleased with last Thursday night's performance and am looking forward to having two more fine performances."

## Students Having Photos Shot Today

Students who did not have their pictures taken last semester for the yearbook may do so today in Stubbs 227 until 4:30 p.m.

There is no charge for the photographing.



DR. WM. AVERY BENFIELD, JR.

## Dr. Benfield To Be Religious Emphasis Week Speaker

Emphasis on religion will be featured at Northeast Tuesday, Wednesday and Thursday with a daily assembly at 11 a.m. in Brown Auditorium and seminars in all dormitories from 6 to 7 p.m.

The traditional Religious Emphasis Week is being sponsored this year by the campus religious committee.

Meetings will emphasize "Christ, Campus and Communism," the theme which the guest speaker, Dr. William Avery Benfield Jr., will develop at the morning assemblies.

Each denomination on campus will be represented at the dormitory seminars.

### RECEPTION

A reception Tuesday from 4 to 6 p.m. in the Ouachita Student Center is planned especially for college students and persons interested in the religious program, the committee said. Women from the various religious centers will serve at the social affair.

Benfield comes from the First Presbyterian Church, Shreveport, where he has been pastor since 1958. He also has served as minister of the Beechmont Presbyterian Church, senior minister, Highland Presbyterian Church, Louisville, Ky., and he has been a professor of Hebrew and Old Testament, vice president and professor of Practical Theology, and instructor in Homiletics during his association with the Louisville Presbyterian Theological Seminary.

## Cigarette Pack, Prediction Prove Profitable Outcome

An empty cigarette pack and a prediction of the outcome of the Northeast-Tech football game proved to be worth \$50 to Joe DiMaggio, a sophomore pharmacy major.

DiMaggio was winner of third prize in the Liggett and Myers contest advertised in October issues of the Pow Wow. Predictions included final and half-time scores. He is from Morgan City.

Tech students won first and second prizes. Pete Meridith and Richard Ray Wilson shared the \$300 first prize, and Gary Lauter and Ann Tharp shared \$75 for winning second.

Tech won the game with a 20-15 score.

## Skits Needed; You're Needed

The final tryout for Redskins on Parade will be Monday, at 7:30 p.m. in Biedenharn Recital Hall, announces Kirby Mooney, chairman for this year's Redskins show.

Organizations are urged to "join in" with their skits to make this a "really big show," says Miss Mooney.

She commented further, "This is our show and people would like to see as much of the individual organizations on campus participating on the stage as possible."

An award will be presented to the organization performing in the best skit. Judges for the acts will be selected from prominent Monroe residents.

## Daughter Born To Ben Bradfords

A baby daughter was born Monday to Mr. and Mrs. Ben Bradford Jr. of Monroe.

Beverly Katherine is the name chosen by the parents for the infant. Bradford is a student at Northeast and is a former yearbook photographer. At present he is employed at the Monroe News-Star as a photographer.

## Editorial

# Nation's Number One Enemy Attacks Ten Million And Costs A Billion Dollars

Heart diseases are the nation's number one health enemy. No member of a family is immune. About ten million men, women and children suffer from heart attacks, strokes, high blood pressure and related diseases. Strokes alone cause more than 180,000 deaths annually and cripple many more. More than 500,000 school-age children and young adults suffer from rheumatic fever and rheumatic heart disease or from inborn heart defects. Statistics show that one out of every two deaths in the U. S., 900,000 each year, is caused by heart disease. These diseases cause a work loss of more than 69,000,000 man-days annually estimated at one billion dollars.

The American Heart Association and its affiliates help all communities combat the problems of heart diseases. The Heart Fund is the annual campaign of the Heart Association for voluntary gifts to finance the nationwide attack on diseases of the heart and blood vessels.

The Heart Fund serves through research in seeking new ways to treat, control, and prevent all forms of heart diseases. It serves, also, to disseminate the latest information to the general public on heart care, support rehabilitation projects, and provide many other essential services for heart patients and their families.

Heart Sunday, Feb. 26, marks the climax of the annual Heart Fund. It is the day when more than 1,500,000 volunteers call on their neighbors to bring a heart-saving message and collect a voluntary gift to help the fight against heart diseases.

The Pow Wow staff joins Kappa Psi Pharmaceutical Fraternity and its adviser, Dr. August G. Danti—also a member of the Ouachita Heart Council—in urging your support of the Heart Fund during Heart Month.

## LITTLE MAN ON CAMPUS



"IT'S JUST YOUR IMAGINATION—NOW HOW COULD A 'PEEPING TOM' LOOK INTO YOUR SECOND-STORY WINDOW."

## Seventy-Nine . . .

(Continued From Page One)  
roe; Jessie Munde Varnado, Monroe;  
Faye Margie Wade, West Monroe;  
Doyline Boyd Walters, West Mon-  
roe; Ralph Darrell Ward, Monroe;  
Sarah Emrick Wilson, Jonesville.

### GEOLOGY

James R. Corry Jr., Monroe;  
Joseph Leroy Francis Jr., Rayville.

### LIBERAL ARTS

William Charles Brodie, Monroe;  
Howard Ray Burrow, Monroe; Cecil  
Elmo Watts, Girard.

### MATHEMATICS

William S. Funderburk, Monroe.

### PHARMACY

Dallas Yates Calhoun III, Mon-  
roe; Charles J. Garner, Monroe;  
Emory Gillum, Monroe.

### PHYSICS

Wallace Don Saucier, Monroe.



## POW WOW

Member  
Associated Collegiate Press

Official publication of the Student Body of Northeast Louisiana State College, Monroe, Louisiana. Published weekly on Friday except during vacation period, holidays, and term examination week. Subscription price, \$2.00 per year. Entered as second-class matter January 5, 1932, at the Post Office at Monroe, La., under act of March 3, 1879.  
Editor . . . . . Joyce YelDell  
Managing Editor . . . Marilyn Burson  
News Editor . . . Linda Robinson  
Sports Editor . . . . . Guy Coates  
Advertising Manager . . . John Leist  
Circulation Manager . . . Pete Mangum  
Cartoonist . . . . . Carroll Green

## On Campus

### PI SIGMA EPSILON

R. D. Williams, senior from Bastrop, will head the college chapter of Pi Sigma Epsilon, national professional fraternity in marketing and management.

Officers for the calendar year were elected at a dinner meeting at the Trianon Restaurant. The group also selected delegates to the national convention scheduled March 4 and 5 in Long Island, N.Y.

Serving with Williams are the following: John D. Milton, West Monroe senior, vice president; John Leist, Monroe junior, executive vice president; Billy Caldwell, Collinston senior, secretary; Jerry Clifton, Ferriday junior, treasurer; Doyle Nalene, Monroe senior, alumni secretary; Freddie Fezatte, Bastrop senior, public relations; Charles Archibald, Archibald senior, publicity; James Bruno, St. Joseph senior, social chairman; Richard Borgoyne, Monroe junior, sergeant-at-arms; Billy Howell, Monroe senior, pledge.

Representing the chapter at the national convention will be official delegates R. D. Williams and John Leist. Other members who plan to attend the meeting include Billy Caldwell, Charles Archibald, James Bailey and Thomas Brock.

The Northeast organization will extend an invitation at the March convention to have next year's meeting in Monroe.

Faculty advisers of Pi Sigma Epsilon are Dwight D. Vines and Thomas Brock, both of the business administration faculty.

### HONOR SOCIETY

Dr. Lewis Marvin McKneely, associate professor of english, will be the guest speaker at the annual open meeting of the NLSC Honor Society Tuesday, at 7 p.m. The meeting will be held in Biedenharn Recital Hall.

McKneely will show slides of Great Britain. Last summer he attended the University of London for study in the neo-classical period of literature. After the summer session he toured the British Isles and Europe.

Students, staff, faculty and public are invited to attend the meeting and informal reception which will follow, a sponsor of the group said.

### STUDENT NURSES ASSOCIATION

Lynn Morris, freshman nursing student from Columbia, was recently named president of the newly-formed Northeast Student Nurses Association in the first election of officers to be held by the group.

Other officers include: Jan Busby, freshman from Chase, first vice president; Toma Gross, freshman from Pioneer, second vice president; June Childress, freshman from Grayson, recording secretary; Linda Moos, junior from Monroe, corresponding secretary; Gay Brown, freshman from

Monroe, treasurer; and Carolyn Oliver, freshman from Crowley, and Virginia Singsfield, freshman from Tallulah, both historians.

The beginning of the spring semester marked the addition of 12 new nursing students to the college's newest division.

### WOMEN'S CLUB

The Northeast Women's Club will view spring fashions Monday during their meeting when a style show will be presented in Biedenharn Recital Hall.

The Women's Club is composed of women faculty and staff members and wives of men faculty and staff members.

Mrs. George Brian, director of the style show, said that wives of the faculty members will model clothes from the Fashion Shop.

Mrs. Dell Lassiter, editor of Alumni News, will be narrator for the event.

### PHI DELTA CHI

An informal dance sponsored by Phi Delta Chi Pharmaceutical Fraternity will be open to the college, according to plans discussed at a recent meeting of the organization.

Details have not been worked out, but a report from PDC said that the dance would be the first sponsored by the fraternity open to college faculty and students without admission.

### SOCIAL SCIENCE CLUB

A tour of the Vicksburg battleground, dinner at a historic restaurant, and afterperformance aboard a Mississippi River showboat are on the agenda for Social Science Club members who take the spring trip this year. Other historic points will be included as well.

The organization has been limited to social science majors, and membership is by invitation only.

Geraldine Bryant and Joyce Piro have been elected to fill the positions vacated last semester of president and vice president, respectively. Lynn Wilhite will continue as secretary-treasurer.

Faculty sponsors are Thomas R. McCann, associate professor of economics; Waddy W. Moore, assistant professor of history; and Dr. Nollie W. Hickman, associate professor of history.

### TAU KAPPA EPSILON

The Epsilon Mu chapter of Tau Kappa Epsilon has completed the sign which identifies the Teke House. The public is invited to come by and see it.

The Teke's defeated the Pushers in Basketball last Thursday night 34 to 22.

### AMERICAN CHEMICAL SOCIETY

Observations on the radioactivity facilities at the University of California and some chemical research

now being done at Southwestern University will highlight a talk by Dr. C. A. MacKenzie, chairman, department of chemistry, Southern University, today at 3 p.m. here.

MacKenzie's appearance is being sponsored by the student affiliation of the American Chemistry Society. He received his Ph. D. degree in organic chemistry from Rutgers University in 1939. He taught chemistry at the University of Nevada. From 1943-46 he was a research chemist with the Ellis-Foster Company in New Jersey. He taught at Tulane University from 1946-56. Since 1956 he has been head of the chemistry department at Southwestern University.

The address will be given in Room 100, Stubbs Hall. Area science teachers and other people interested in radioactivity are invited to hear MacKenzie's talk.

### WESLEY FOUNDATION

Dr. Perry Howard, associate professor of sociology, will lead the first in a series of discussions of "Current Events" at the Wesley Foundation.

Howard will lead the group in discussing "meeting the cost of health care" Sunday afternoon from 5:30 to 6:45, the regular time designated for the series.

The Rev. George Duerson, director of the Foundation, said that anyone who is interested in a lively and down to earth discussion on the topic for Sunday, or others to come, are invited to attend. The discussions will break up in time for participants to go to church services, he added.

added.

Other subjects listed for discussion in the near future include "the possibility of communism's taking over the world," "socialized medicine," and "the African situation."

### STUDENT LOUISIANA TEACHERS' ASSOCIATION

The meeting time of the Student Louisiana Teachers' Association has been changed from the third Tuesday of the month to the fourth Thursday at 4 p.m., Wanda Lenard, president, said. Meetings will be in Stubbs 100.

Gertrude M. Sandrock, assistant professor of music, will lead a panel discussion concerning education at next week's meeting. The panel will include five SLTA members: Georgia Ruth Owens, Jimmy Anding, Shirley Lamb, Joann Dew and Sandra Johnson. Miss Lenard urged all members to be at the meeting.

### WOMEN'S RESIDENT COUNCIL

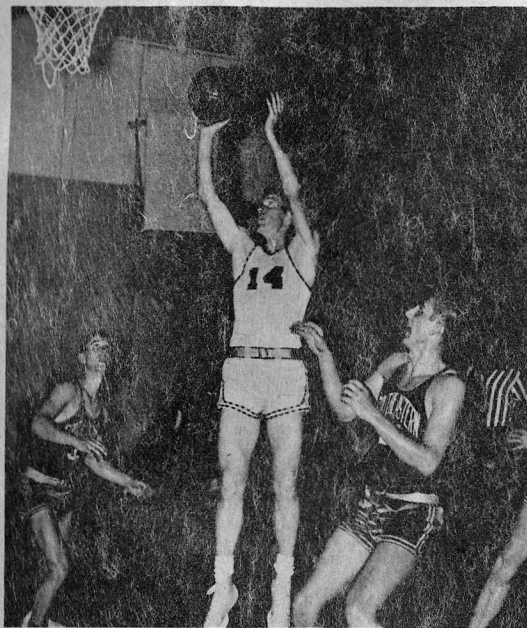
The Council of Resident Women Students is making plans for a Mothers' Weekend on March 18 and 19. The program will consist of a style show followed by a tea on Saturday afternoon and a breakfast on Sunday morning.

Alma Lufey, counselor to women students, said, "Cooperation is earnestly solicited from each resident in order for this program to be among the most memorable ones she and her mother have enjoyed together."

Letters of invitation will be mailed to the mother or guardian of each resident, Miss Lufey added.

College Town Branch

# UACHITA NATIONAL BANK



**JUMP SHOT** — Stuart Toms (14) hits a jump shot in Monday night's game with Southeastern, as Lions Mike Brinkley and Al Link move in. Toms and Indians teammates rallied in the second half to take a 71-63 victory. (Photo by Davis Roane.)

## 1961 Golfers Scheduled To Begin Play March 3; 11 Meets Slated For This Year

In less than a month Northeast linksmen will be out on the fairways attempting to catch the Gulf States Conference golf title.

The Tribe will play all home games at the Bayou de St. Louis Country Club, announced Athletic Director Jack Rowan.

### The Golf Schedule:

- March 3—Ouachita Baptist College, Monroe
- March 10—Centenary College, Monroe
- March 16-17—McNeese State Invitational Tourney, Lake Charles

- March 24—Northwestern State College, Natchitoches
- March 30—Centenary College, Shreveport
- April 7—University of Southwest, Monroe
- April 12—La. Tech, Ruston
- April 21—Mississippi Southern College, Hattiesburg, Miss.
- April 28—McNeese State College, Monroe
- May 4, 5, 6—Southern Intercollegiate Tourney, Athens, Ga.
- May 11, 12—Gulf States Conference Tourney, Monroe

# Coaches Terry, McClendon Scheduled As Guest Speakers At Annual Grid Clinic

Two guest speakers for the Northeast football clinic have been announced today by Athletic Director Jack C. Rowan.

Defensive specialists, coaches Charles McClendon and George Terry of Louisiana State University, will talk on the defensive game of football at the clinic, March 18.

Defense is more than a philosophy to Louisiana State football. It's a way of life, according to the way the LSU coaching staff looks at it. Any athlete who is not good defensively will find it hard to crack the starting lineup, because Coach Paul Dietzel and his staff feel that this is the most important part of any successful operation.

### SUCCESS

The success encountered by Louisiana State in recent years must certainly be attributed to sound defense. In 1959, the Tiger gridders allowed only three touchdowns in regular season play, and the total points scored on the hard-hitting Bengals were only 29, or 2.9 points

average. Further testimony to the solid foundation laid by Coaches McClendon (line) and Terry (backfield) is the fact that the potent Ole Miss Attack, good enough to head the South offensively for the past three years, has yet to score a touchdown on the Tigers in that period of time during regular season play.



GEORGE TERRY

LSU defenders, noted for their relentless pursuit, have allowed only 2107 yards rushing in the past 20 regular season games, an average of 105 yards per game; they have allowed only 201 first downs during that period, or just over 10 first downs per game.

### ALERT DEFENSIVE BACKS

Coach Terry's defensive backs have been alert, too. A desperation pass by Tulane in the closing minutes of the 1960 game registered the only touchdown pass on an LSU team in the last 20 regular season games. During that period LSU backs grabbed off 30 enemy aeriels and returned them 511 yards.

The real secret of the LSU de-

fense is the pride instilled in defensive players. Most LSU players get as big a thrill in spilling the opponent's offense as they do in making the long run themselves.

And behind this pride is the hard work of Coach McClendon and Coach Terry. They work and teach so diligently, that each player has the confidence to make the defensive move without fear. Each LSU defender gains this confidence because through intense and competent coaching, he knows his job.

Coach McClendon came to LSU in 1953 after a playing career at Kentucky and as an assistant at Kentucky and Vanderbilt. Coach Terry came to LSU from Pine Bluff, Ark. high school.

Both men take pride in their work and both are rated among the finest defensive coaches in America.

John Bridges, athletic director and head football coach at Baylor University, will also be a featured speaker at the clinic. Bridges will speak on offensive football.

### Intramural Schedule

Feb. 21

- 6:00—Misfits - Ramblers
- 6:00—Trotters - Cajuns
- 7:00—Blue Runners - Mullattos
- 7:00—Cool Gents - Hawks
- 8:00—Pills - TKE
- 8:00—STG - Pushers

Feb. 23

- 6:00—Red Shirts - Raiders
- 6:00—Gunners - Cowards
- 7:00—59'ers - Romeos
- 7:00—bye - Rinky Dinks
- 8:00—KA - TKE
- 8:00—BSU - Pills

Feb. 27

- 6:00—Misfits - Cajuns
- 6:00—Ramblers - Hawks
- 7:00—Trotters - Mullattos
- 7:00—Cool Gents - Blue Runners
- 8:00—STG - TKE
- 8:00—Pushers - Pills



CHARLES MCCLENDON

per game. In 1960, operating with many new faces in the lineup, the Tigers allowed only four touchdowns, but the field goal was their undoing. As



Impala V8 Convertible



Impala V8 Sport Sedan



Impala V8 Sport Coupe

**18**  
**JET-SMOOTH**  
**CHEVROLETS**  
**PRICED**  
**LOWER**  
*than competitive models!!!*

Every one of the 18 Chevrolets you see here is priced lower than comparable competitive models.\* Proof of how easy it is to fit a Chevy into your budget. And every model gives you Chevy's Jet-smooth ride and dozens of other engineering and styling advantages you can't find in anything else selling at anywhere near the money.



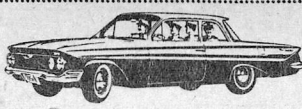
\*Based on a comparison of manufacturers' suggested retail prices (including Federal tax) for models with 118-inch wheelbase or above



Impala V8 2-Door Sedan



Bel Air V8 4-Door Sedan



Bel Air V8 2-Door Sedan



Biscayne V8 4-Door Sedan



Biscayne V8 2-Door Sedan



Nomad V8 4-Door 9-Passenger Station Wagon



Nomad Six 4-Door 9-Passenger Station Wagon



Nomad Six 4-Door 6-Passenger Station Wagon



Nomad V8 4-Door 6-Passenger Station Wagon



Parkwood Six 4-Door 9-Passenger Station Wagon



Parkwood Six 4-Door 6-Passenger Station Wagon



Parkwood V8 4-Door 9-Passenger Station Wagon



Parkwood V8 4-Door 6-Passenger Station Wagon



Brookwood Six 4-Door 6-Passenger Station Wagon



Brookwood V8 4-Door 6-Passenger Station Wagon

## \$1500 Fellowship Offered To Grads

Interested graduates are eligible to apply for a graduate fellowship in the amount of \$1500 for advanced study in the field of social service.

The fellowship is to be awarded by Alpha Xi Delta, national social sorority for college women.

The efforts of Alpha Xi Delta in service to others are focused on the American child and methods of combating juvenile delinquency by working locally with juvenile courts and social agencies.

The deadline for filing applications is March 1, and those wishing to apply may contact Hermione Driskell, 804 McGuire, telephone, FA 3-9773.

## European Tour Offered Students

An European Tour is on the agenda for the Annual History Tour of Louisiana College.

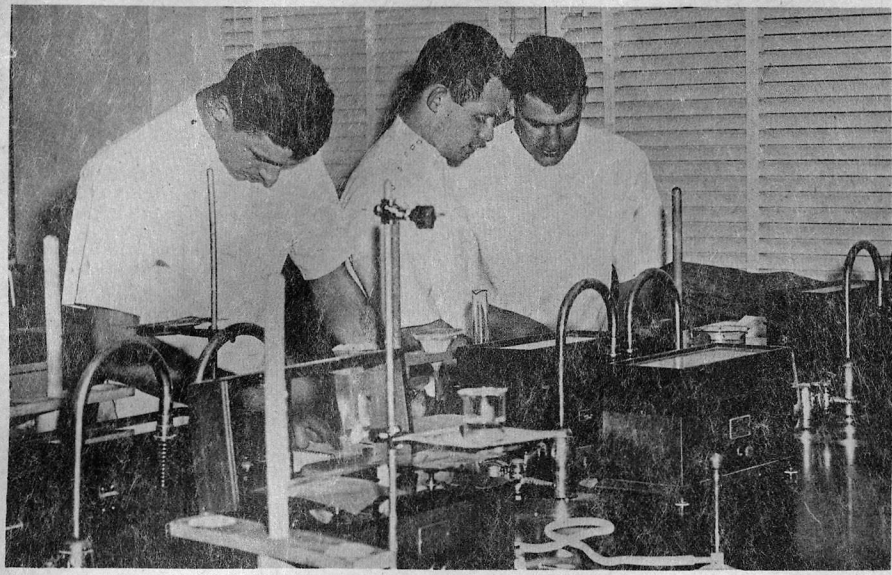
Seventeen days, August 10-27, will be spent abroad and six foreign countries will be visited; England, Holland, Belgium, Germany, Switzerland and France.

According to Dr. A. Loyd Collins, the dean of the faculty and chairman of the history department, the basic cost for the trip is \$750, which includes transportation to and from Europe, all transportation in Europe to various cities and countries, hotel accommodations, most meals, admissions, entrance fees, and tips.

Highlights of the tour will include: London, England; Brussels, Belgium; Antwerp, Holland; a trip up the Rhine River with lunch in Heidelberg, Germany; Lucerne, Switzerland; and Paris, France.

The trip is open to the public as well as to students, and can be taken with college credit. Credit will be offered in Contemporary European History (332), or Geography.

Inquiries for detailed information and literature regarding the trip should be made directly to Dr. A. Loyd Collins, Louisiana College, Pineville, La.



**FILLING PRESCRIPTIONS** — Pictured are three pharmacy students working on a laboratory assignment for class. Left to right are William Hall, Cooper Helm and Belvin Fontenot. The department of pharmacy here offers a variety in experience for pharmacy majors. (News-Bureau Photo.)

## Northeast Reflects Dynamic Changes In Physics

Physics is a dynamic, rapidly changing field, whose dramatic progress frequently makes newspaper headlines covering such topics as atomic energy, rockets, satellites, and transistors. The present national interest and emphasis on science is reflected by the rapid growth of the physics department.

Northeast offers a program leading to the Bachelor of Science degree in physics, and well-qualified physics graduates have ample opportunity for going into government or industrial employment. Many physics graduates desire to continue their education toward the Ph.D., consequently a number of industries offer positions which enable the physicist with a B.S. degree to work for their company and pursue graduate courses simultaneously.

**STAFF**

Most of the seven men physics staff here have had industrial experience themselves and are familiar with what is expected of employees

in such situations.

One reason that the physics major is so much in demand is that his training is so broad. He completes almost as much mathematics as the mathematics major and takes additional courses in chemistry. The physics curriculum itself embraces such diverse areas as: mechanics, electricity and magnetism, sound, heat, light, electronics, nuclear processes and physics of the atom.

New power panels and accompanying special tables added this year permit the distribution of both alternating and direct current electricity to the individual positions in the general physics laboratory, greatly enhancing these facilities.

**LABORATORY**

The advanced electricity laboratory contains new benches of a unique design which have built-in instrument panels. A continuous strip of electrical outlets along the turret of one table allows several students to plug in soldering irons and testing instruments for construction of electronic circuits.

Despite all the new equipment and specially designed laboratory furniture, according to Glenn F. Powers, chairman of the physics department, the most important item in the program at Northeast is the student. "We like to think that our entire program is student-oriented," says Powers. "In the general physics courses, for instance, which serve other areas of the college such as pharmacy, geology, chemistry, mathematics, and some pre-professional areas, our lecture professor is in complete charge of the laboratory for his course and meets the same group in the laboratory that he has in lecture. In this way we feel that maximum correlation between the laboratory and lecture can occur."

**NATURE**

Recognizing the dynamic nature of the subject, the physics department introduces the student to faculty-directed research which is included as an advanced laboratory course. The student is permitted to work in an area of his own personal interest or to participate in departmental sponsored research. Present interest centers around solid state physics.

## Street Conditions To Be Improved

Northeast is due for several street improvement projects by the Department of Highways, according to Rep. Lawrence Gibbs, local representative.

Gibbs, Rep. Mike John Jr. and President George T. Walker met with Director Ray Burgess in Baton Rouge last week.

"We were successful in getting several street projects for the college," Gibbs said.

Due for improvement are College Avenue, from U.S. Highway 80 to LaSalle Street; Evangeline Street, through the campus to Bayou Drive; and an additional street running through the campus.

Gibbs said the work is scheduled to be done this summer.

**Why Pay More?**  
**Save At Balsamo**

**LOWER PRICES  
ACROSS FROM THE  
COLLEGE**

**BOWL  
AT  
BOWLERO**

**OPEN 24 HRS. DAILY**  
1402 Louisville  
**COOL — FUN**

**LISTENING . . .  
OR LOOKING!**

**COLLEGE STUDENTS  
PREFER A  
NOE Station**

**KNOE**  
1390 on your Dial  
MUSIC - NEWS - SPORTS

**KNOE-TV**  
Channel 8  
CBS, AND ABC  
TELEVISION NETWORKS

**It's So Easy To Central-ize  
Your Banking  
At Northeast Central Bank**

DeSiard On Smith Ave.

## Watzman Completes Requirements For Ph.D. Degree In Pharmacology

Nathan Watzman, assistant professor of pharmacology and physiology, has recently completed requirements for the Ph.D. degree at the University of Pittsburgh. The announcement was made by Ralph M. Wilson, dean of the School of Pharmacy.

Watzman, a major in pharmacology for the doctorate, wrote his dissertation on "The Effects of Certain Compounds on Experimental Muscular Dystrophy."

**RESEARCH**

The research on the subject stemmed from the instructor's interest in muscular diseases.

Information gathered from libraries dated back to 1928. From this material the instructor developed the program of work which he used for the dissertation.

Knowledge pertaining to muscular dystrophy is quite limited, Watzman said. Scientists are slowly making progress, however, in dealing with this disease, he added.

**EXPERIMENTATION**

Experimentation made it possible for the instructor to produce in rabbits and rats muscular weaknesses which are similar to muscular dystrophy. This was achieved by removing Vitamin E from the diet. An interesting phase of laboratory work, he pointed out, was the use of a special strain of mouse, which genetically develops the disease at the age of three weeks.

"We now can prove that a certain mutant strain of mouse develops this dystrophic condition which resembles the condition noticed in humans," Watzman said.

He used these mice, obtained in a Maine laboratory, as tools of work in addition to experiments with Vitamin E.

Watzman plans to continue research in the field of muscular dystrophy.

His dissertation will be submitted to the Journal of the American Pharmaceutical Association, which published information in his master's thesis dealing with cardiovascular effects of Vitamin B 1.

**WHEN YOU WISH ENOUGH  
TO LOOK YOUR VERY BEST**

Just Dial FA 3-9951

**COLLEGETOWN  
BEAUTY SHOP**

Just 1 Block West of  
College Campus

**STUDENTS:  
BUY YOUR  
DIAMOND FROM  
R & A Jewelers**

**OUR SPECIAL STUDENT  
DISCOUNT WILL  
SAVE YOU \$\$\$**

**MONROE'S OLDEST  
DIAMOND MERCHANT**  
Paramount Theatre Bldg.

**JANIE'S  
Alteration Shop**

3211 LOUISVILLE  
EXPERT ALTERATIONS

**WANTED!**

ADVERTISERS

**PIZZA DRIVE - IN**

3036 DeSiard St. -- Monroe, Louisiana  
Phone FA 2-9239

**Enjoy our  
CRISPY  
PIZZA**

Discount to  
College Students

**CHEESE  
PEPRONI  
SALOMIA  
SAUSAGE  
MUSHROOM  
PEPPER  
ANCHOVIE  
ROUND THE WORLD**

Nickel Juke Box