



The Pow Wow Newspaper

4-24-1959

The Pow Wow, April 24, 1959

Heather Pilcher
pilcher@ulm.edu

Follow this and additional works at: https://repository.ulm.edu/pow_wow

Recommended Citation

Pilcher, Heather, "The Pow Wow, April 24, 1959" (1959). *The Pow Wow Newspaper*. 649.
https://repository.ulm.edu/pow_wow/649

This Book is brought to you for free and open access by ULM Digital Repository. It has been accepted for inclusion in The Pow Wow Newspaper by an authorized administrator of ULM Digital Repository. For more information, please contact lowe@ulm.edu.

Beauty Bulletin

Library
Northeast Louisiana State College
Monroe, Louisiana

EXTRA

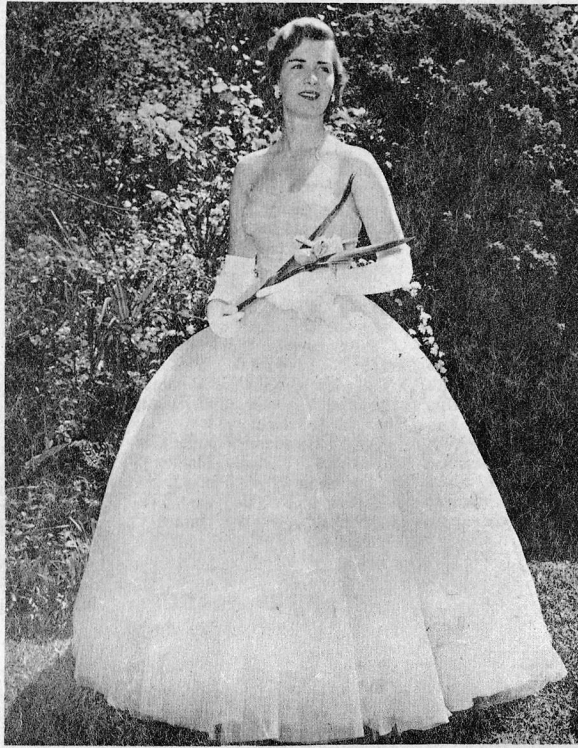
POW WOW

EXTRA

Vol. XXX, No. 24

NORTHEAST LOUISIANA STATE COLLEGE, MONROE, LOUISIANA

Friday, April 24, 1959



*Miss Northeast 1959
Miss Bobbie June Moore*



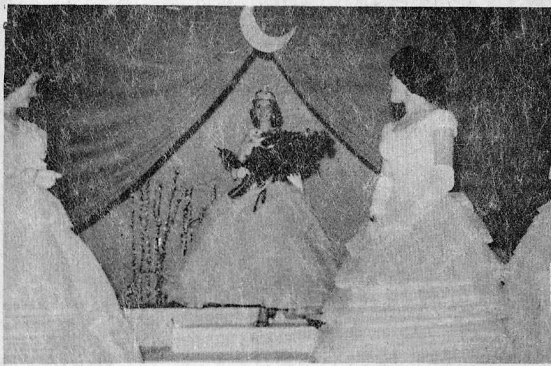
MISS ANN NICHOLS
First Runner-up



MISS JEAN STARK
Second Runner-up



MISS JANIS HILBURN walks away with coveted MISS CONGENIALITY cup.



MISS NORTHEAST smiles with regality as she begins her royal reign for 1959.



CROWNING BEAUTY QUEEN is President George T. Walker.



FIVE FINALISTS make last appearance for judges. Left to right are Joan Dupuy, Bobbie June Moore, Ann Nichols, Jean Stark, and Bobbie Strickland.



HAPPY WINNER holds coveted trophy while assistant pageant director, Rita Snider, brings coronation bouquet of royal roses.



FIRST RUNNER UP Ann Nichols appears in evening dress for judges' approval.



MISS LOUISIANA, Alberta Futch, provided added loveliness to local pageant with stately beauty.



MASTER OF CEREMONIES Jack Ussery kept program at a lively and lovely pace.



DELOVELY DUDES above are members of Phi Mu Sorority who recently visited the Gulf Hills Dude Ranch for a house party in Ocean Springs, Miss. Activities included horseback riding, water skiing, and swimming. Left to right (top row) are Nancy Blake, Mary Lynn Scoggin, Mary Jane Ferguson, Gay Demmary, Mrs. Clifton Flinn (faculty chaperone), Dee Barksdale, Miss Winnetta Thomas (faculty chaperone), and Jean Stark. MIDDLE ROW includes Frances Hill, Abby Minuet, Peggy Wingate, Jeanette McDonald, Lillian Price, Alice Guyton, Ann Landry, and Peggy Tipton. BOTTOM ROW includes Julia LeBlanc, Jeanette Brooks, and Margaret Varnado. (Photo by Wally Hill, Ocean Springs, Miss.)

Summer School Here To Offer Special Marine Studies In Ocean Springs, Miss.

Beginning with the summer semester Northeast students may take courses in marine biology and marine geology at the Gulf Coast Research Laboratory at Ocean Springs, Mississippi. Credit for the studies will be the same as for regular college classes here at Northeast.

Upon return from a 13-week stay at the Research Laboratory, Edward C. Whatley, Assistant Professor of Biology, recommended that Northeast become affiliated with the Laboratory along with Louisiana State University and Northwestern State College. The agreement made between Northeast and the Board of Trustees of institutions of Higher Learning of Mississippi provides that room and board for Northeast students will be at the same rate as for Mississippi students.

Registration will be done completely by Northeast. Local college students will also be eligible for enrollment in other courses that might be established in biology and geology. Course numbers will be listed in both the Northeast and Gulf Coast Research Laboratory catalogues.

Prerequisites for admission will be the same as for Mississippi students as determined by Dr. Gordon Gunter, director of the Research Laboratory, or by other professors of the institute.

Whatley said that any student of advanced standing in biology would probably be eligible.

Roles Offered In One - Act Plays Slated Here May 15

A group of one-act plays are scheduled to be presented in the Recital Hall of Fine Arts on May 15, announced George C. Brian, assistant professor of Speech at Northeast State. Student directors for these plays are Charles Morgan, Billie Sue Swanson, and Pat Medaries.

Exceptionally good scripts have been obtained for these plays, and many fine roles are available for interested students, Brian said.

Student actors are presently being sought for the different roles, and all students interested in trying out for a part in any of the plays are urged to do so, members announced.

The student directors will hear readings for those trying out for roles on May 1 in the Recital Hall, where all rehearsals and the final performances will be held.

COLLEGE RADIO DEPARTMENT REPORTS WEEKLY ACTIVITIES

The Radio Department continues an active schedule of broadcasts over local KUZM each Tuesday and Thursday at 4:30 P.M. Members of the Radio-TV class, 130 a, are currently in charge of programs with a line-up of lively, interesting listening. Planned for Tuesday, April 28th, is a timely interview with the leading members of the cast of "Magnificent Obsession" and Mr. George Brian, director. For the first week of May there's music on the agenda with talented students of Mrs. Florence Albritton as guests.

Recent broadcasts have included interviews with members of the Directing Class of the Speech Department, a dramatization of the famous short story: "Lady or the Tiger," and a variety program with contestants in the Northeast Beauty Pageant. Appearing on the last-mentioned program were: Rita Snider, co-director of the pageant, Charlene Carrere, Clarice Brown, Bobbie Strickland, Janis Hilburn, Jean Stark, Bobbie June Moore, Ann Nichols, and Joan Dupuy. Norman Jones was in charge of the broadcast, making arrangements for a control board operator, a director, and for an announcer.

In addition to the radio broadcasts the Radio-TV class has recently added practice TV programs to its classwork. Each week members of the class drive to KLSE-TV where they learn about TV first - hand, operating the cameras, handling the boom mike, directing the programs and participating in such make - believe broadcasts as news, interviews, and "guest appearance" shows. Mr. Gordon Canterbury, Manager of Educational KLSE-TV, has been very generous in allowing the students to use the equipment and facilities of the station. He has encouraged "live" participation and training over KLSE-TV because he believes that on-the-job work is one of the chief assets in education, especially the medium of Television.

Members of the class are: Linda Rogers, Clay Scroggins,

New Bowling League Begun Here By Class

The Monday - Wednesday Bowling class under the instruction of Coach DeMoss has added a new interest - a bowling league. It is composed of four teams: the Bears, the Hookers, the Keglers, and the Tenpins.

Don Spatafora of the Bears has the highest individual score of 255. Standings for this class follow.

Team	W	L
BEARS	17	7
KEGLERS	12	12
TENPINS	10	14
HOOKEERS	9	15

Pi Sigma Epsilon NAIA Includes Sponsors Program Eight Trackmen In Beauty Pageant Here On Lists

The program for the Miss Northeast Beauty Pageant was sponsored this year by Pi Sigma Epsilon, Sales Fraternity of the Northeast State Business Department. The national sales fraternity is composed of business students who are interested in marketing and sales management careers, according to Floyd Ham, president.

Members of the chapter were recently honored guests at a dinner given by the Professional Sales Executive Club of this area. This organization is made up of leading sales managers of the Twin Cities, who sponsor the Northeast chapter. The dinner, held at Bayou DeSiard Country Club, featured the National President, Al Sears, as guest speaker. Mr. Sears is a retired vice-president of the Remington-Rand Corporation.

Faculty sponsors of the college chapter include D. D. Vines, instructor in Commerce; W. L. Perkins, associate sponsor and head of the Department of Business Administration; and H. W. Morton, associate sponsor and associate professor of Commerce.

Newly elected officers of the fraternity include President Floyd Ham, Ed Skoog, secretary and reporter; and Bennie George, treasurer.

Other members include Gerald Arrant, Charles Blackwell, Jr., Vernon Freeman, David Johnston, Kincaide Key, Howard Stapp, Jr., and James G. Daniels.

BOWLING LEAGUE

Team	Total No. Points
Splits	19
Strikes	16
Dobs	15
Maple Maulers	13
Bowlway	12
Impossibles	9
Strugglers	6
Scroungers	6

Eight Northeast Louisiana State College trackmen have placed in the National Association of Intercollegiate Athletics official track statistics for the best time in the nation among the small colleges.

The report, the first made by the NAIA this spring, is complete through April 15.

The Northeast mile relay team of Dave Styron, Jim Mouser, Dick Hays and Don Styron were first in that event with a record 3:17.6 set at Fort Worth, March 14. East Texas State, defeated by the Indians 54-53 at that time in the Southwestern Recreation Track Meet, has the best reported times in the 440 and 880 relays.

Dave Styron of Northeast, a versatile performer who won the Most Valuable Track Man Award, April 11 in the SLI Relays, won individual honors of tying for first-place in the century with :09.4; second-place in the 220-yard dash with :20.8, and seventh in the broad jump with 23.0.

Don Styron, his twin, tied for first in the 220-yard low hurdles with :22.9 and tied for second in the 120-yard high hurdles with a time of :14.2.

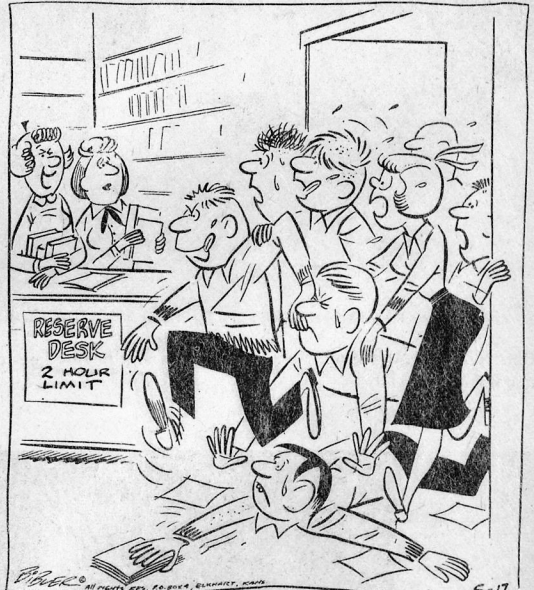
Dick Hays, a third member of the winning relay team, was seventh in the 440-yard dash with a time of :48.4.

Other Northeast track members who placed high in the rankings include: Bob Jaenicke, ninth in the 880-yard run with a time of 1:55.6; Jack Williams, fifth in the 2-mile run, 9:45.8; Jerry Ivy, sixth in the broad jump, 23-1 1/4, and Gene Hagen, fifth in the pole vault with 13-3.

One good way to forget all your troubles is to wear tight shoes.

This cartoon is dedicated to those unfortunates who are just NOW being exposed to the Reserve desk because of upcoming term papers.

LITTLE MAN ON CAMPUS



"PROF SNARE IS UP TO HIS OLD TRICKS - MAKING AN ASSIGNMENT AN PUTTING ONLY ONE REFERENCE BOOK ON RESERVE!"

ATTENTION GIRLS JUST OPEN

CAMPS DRESS SHOP

4 Blocks from School 217 Sterling Road Near the Intersection

Why Pay More? Save At Balsamo



Reg. . . . 28.9
Esso Ext. . . 34.9
Golden . . . 35.9

across from the college

Student Accounts Especially Welcome

R & A JEWELERS

Headquarters for fine Diamonds
PARAMOUNT THEATER BLDG.